

STANDARD DEPARTURE
ROUTES – INSTRUMENT
(SID)

HERINGSDORF
RWY 10/28

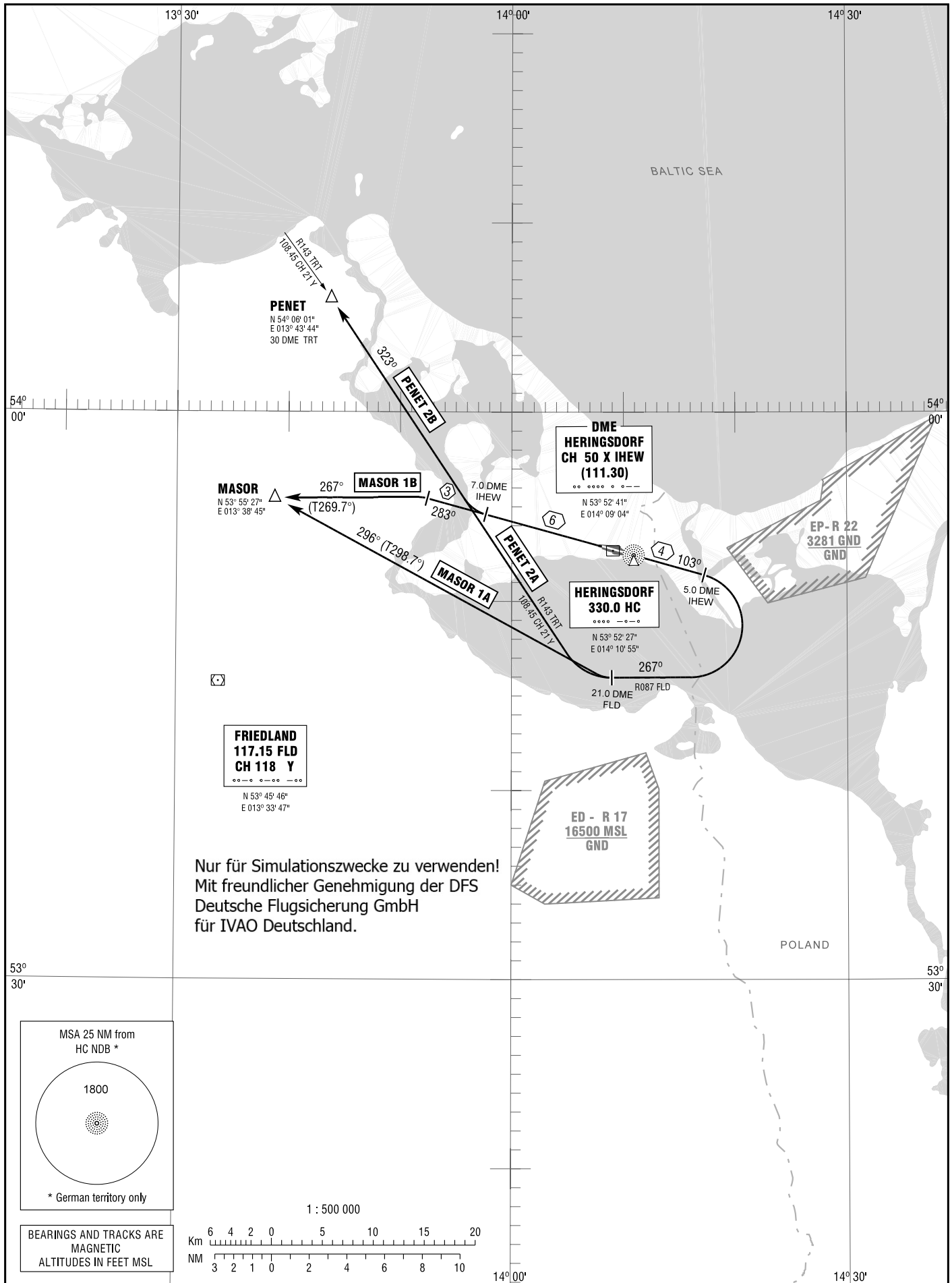
Designator	Route	After Take-Off		Remarks
		Climb to	Contact	
1	2	3	4	5
RWY 10				
MASOR 1A	MASOR ONE ALPHA On track 103° via HC NDB to 5.0 DME IHEW; RT to intercept R087 FLD; on R087 FLD to 21.0 DME FLD; RT, on track 296° to MASOR (Δ).	5000 ft	Bremen Radar 126.175	After passing 21.0 DME FLD BRNAV equipment necessary.
PENET 2A	PENET TWO ALPHA On track 103° via HC NDB to 5.0 DME IHEW; RT to intercept R087 FLD; on R087 FLD to 21.0 DME FLD; RT, on R143 TRT to PENET (Δ).			
<p>RWY 28</p> <p>Nur für Simulationszwecke zu verwenden! Mit freundlicher Genehmigung der DFS Deutsche Flugsicherung GmbH für IVAO Deutschland.</p>				
MASOR 1B	MASOR ONE BRAVO On track 283° HC NDB to 10.2 DME IHEW; LT, on track 267° to MASOR (Δ).	5000 ft	Bremen Radar 126.175	After passing 9.6 DME IHEW BRNAV equipment necessary.
PENET 2B	PENET TWO BRAVO On track 283° HC NDB to 7.0 DME IHEW; RT, on R143 TRT to PENET (Δ).			

HERINGSDORF
RWY 10/28

TOWER	132.825
BREMEN RADAR	126.175

TRANSITION
ALTITUDE 5000
VAR 3° E

STANDARD DEPARTURE
CHART - INSTRUMENT
(SID)



Nur für Simulationszwecke zu verwenden!
Mit freundlicher Genehmigung der DFS
Deutsche Flugsicherung GmbH
für IVAO Deutschland.

Correction: Procedure.